

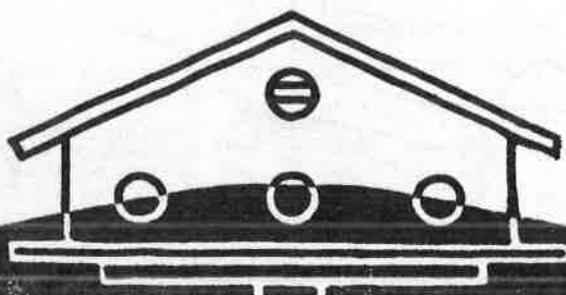
**NESTING BOXES
FEEDING STATIONS
BIRD HOUSES
WILDLIFE SHELTERS**

AND

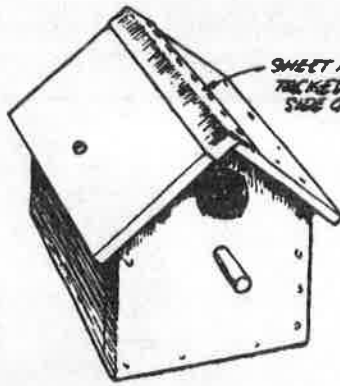
HOW TO BUILD THEM

Winter months are ideal for "puttering around." Why not do something constructive for wildlife.

**PENNSYLVANIA GAME COMMISSION
HARRISBURG**



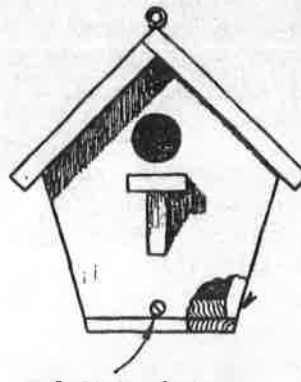
BIRD HOUSES



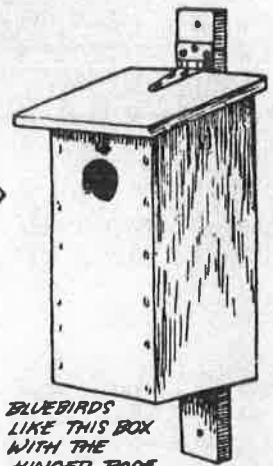
TO OPEN FOR CLEANING REMOVE SCREW AND SLIDE MOVEABLE HALF OF ROOF OUT FROM BENEATH METAL RIDGE.



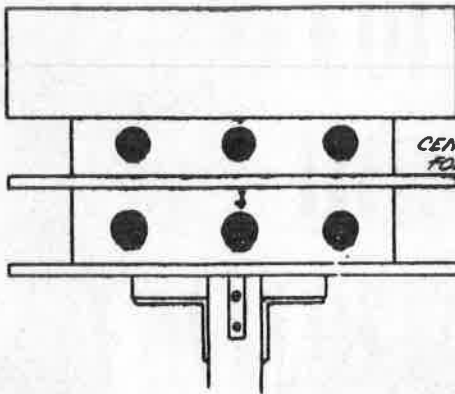
TIN CAN WREN HOUSES SHOULD BE PLACED IN A SHADY LOCATION TO PREVENT OVERHEATING.



2 SCREWS SECURE THE FLOOR OF THIS WREN HOUSE. ONLY BOXES INTENDED FOR WRENS & MARTINS SHOULD BE HUNG FROM LIMB; OTHERS TO BE FASTENED SECURELY TO A POST OR TREE TRUNK.

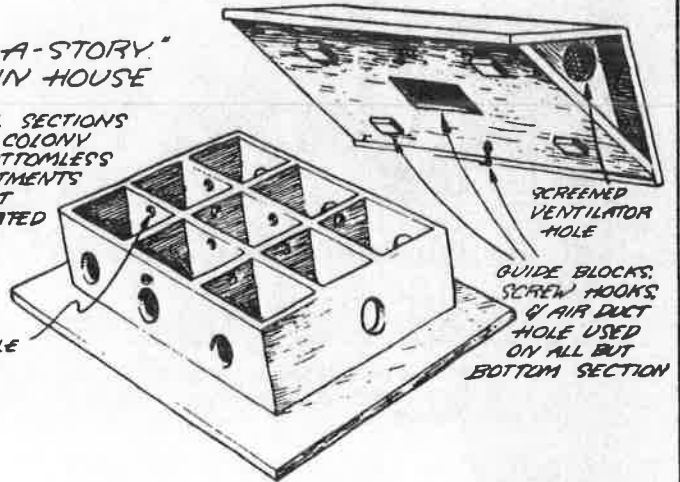


BLUEBIRDS LIKE THIS BOX WITH THE HINGED ROOF



"ADD-A-STORY" MARTIN HOUSE

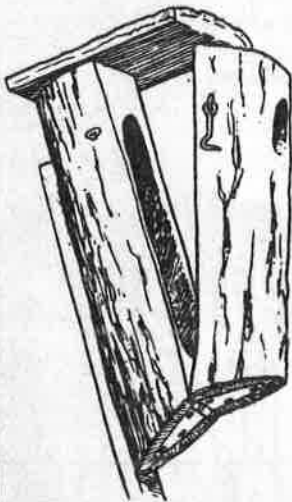
ADDITIONAL SECTIONS ADDED AS COLONY GROWS. BOTTOMLESS CENTER COMPARTMENTS FORM AIR DUCT TO VENTILATED "ATTIC".



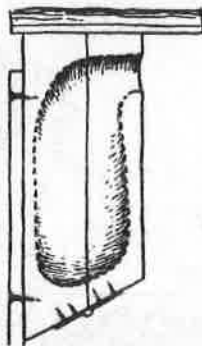
SCREENED VENTILATOR HOLE

GUIDE BLOCKS, SCREW HOOKS & AIR DUCT HOLE USED ON ALL BUT BOTTOM SECTION

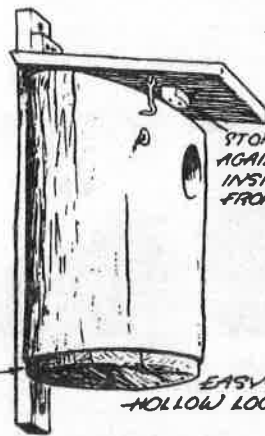
5/16" HOLE



THIS RUSTIC HOUSE IS MADE BY SPLITTING A SECTION OF LOG, THEN CARVING OUT A NESTING CAVITY.



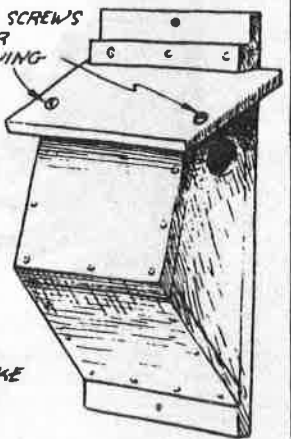
DON'T ALLOW BOTTOM TO EXTEND BEYOND SIDES OF LOG



REMOVE SCREWS FOR CLEANING

STOP BUTTS AGAINST INSIDE FRONT

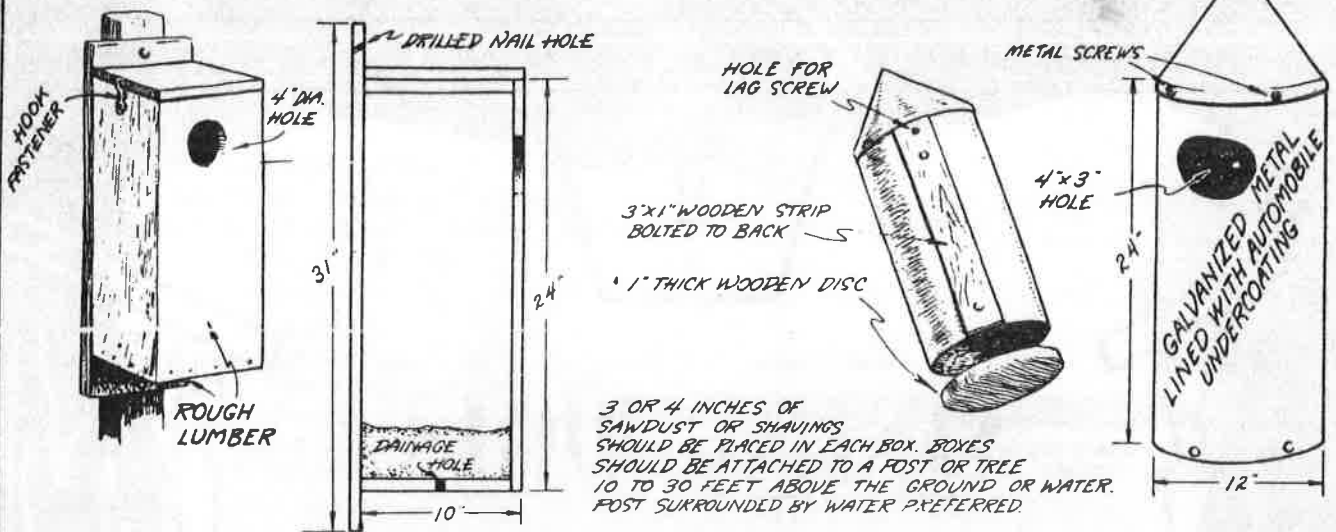
EASY-TO-MAKE HOLLOW LOG BOX



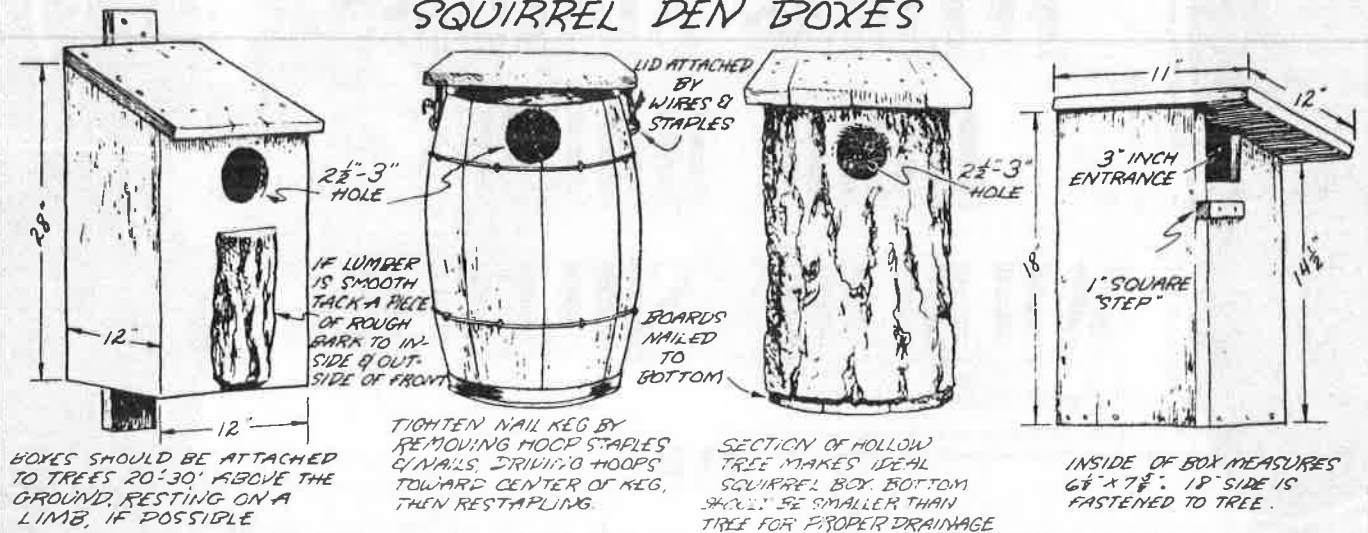
SPECIES	FLOOR OF CAVITY	DEPTH OF CAVITY	ENTRANCE ABOVE FLOOR	DIA. OF ENTRANCE
BLUEBIRD	5x5"	8"	6"	1 1/2"
CHICKADEE	4x4"	8-10"	6-8"	1 1/2"
TITMOUSE	4x4"	8-10"	6-8"	1 1/4"
NUTHATCHES	4x4"	8-10"	6-8"	1 1/4"
HOUSE WREN	4x4"	6-8"	1-6"	3/8"
CAROLINA WREN	4x4"	6-8"	1-6"	1 1/8"
CRESTED FLYCATCHER	6x6"	8-10"	6-8"	2"

SPECIES	FLOOR OF CAVITY	DEPTH OF CAVITY	ENTRANCE ABOVE FLOOR	DIA. OF ENTRANCE
FLICKER	7x7"	16-18"	14-16"	2 1/2"
RED-HEADED WOODPECKER	6x6"	12-15"	9-12"	2"
DOWNY WOODPECKER	4x4"	8-10"	6-8"	1 1/4"
PURPLE MARTIN	6x6"	6"	1"	2 1/2"
TREE SWALLOW	5x5"	6"	1-5"	1 1/2"
BARN OWL	10x18"	15-18"	4"	6"
SPARROW HAWK	8x8"	12-15"	9-12"	3"

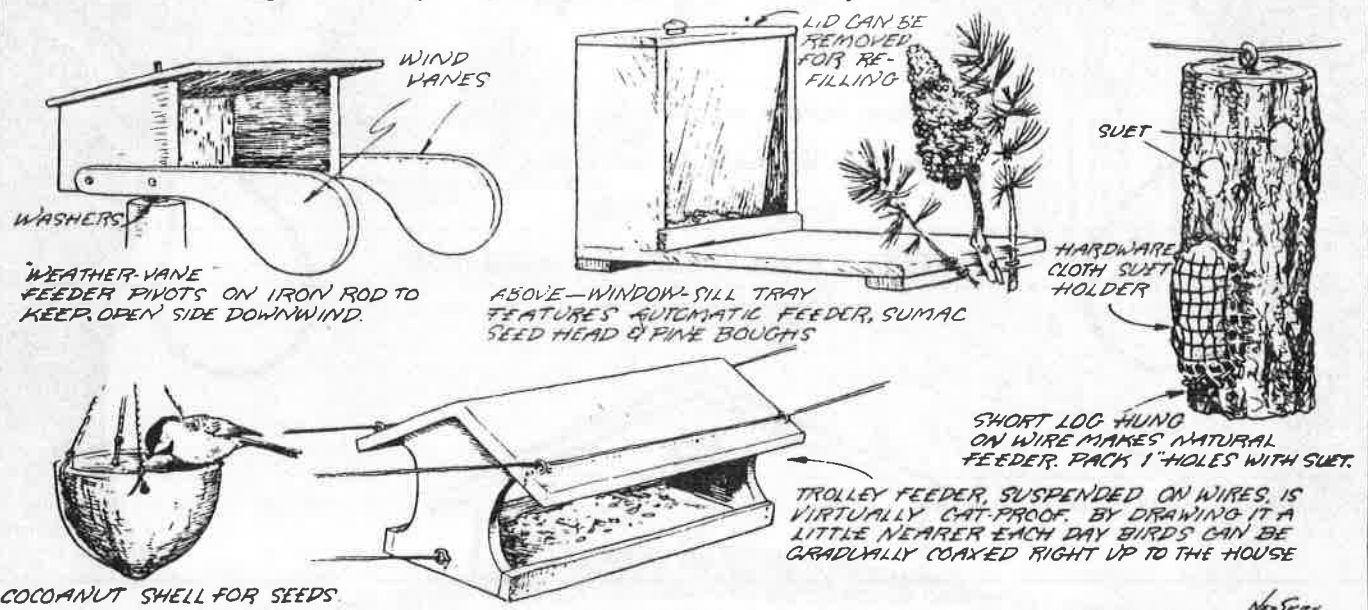
WOOD DUCK NESTING BOXES



SQUIRREL DEN BOXES



FEEDING STATIONS FOR SONGBIRDS



PLAN NOW FOR
FOOD and **COVER**



HERE ARE
SOME PRACTICES
YOU MIGHT TRY ON
YOUR LAND



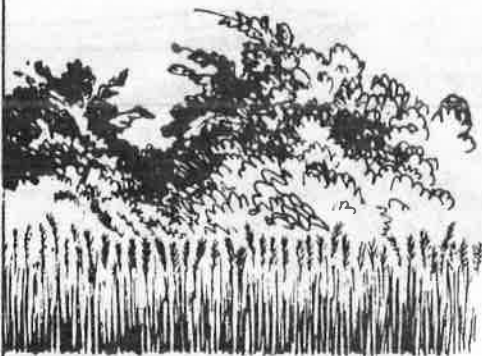
C R O P S



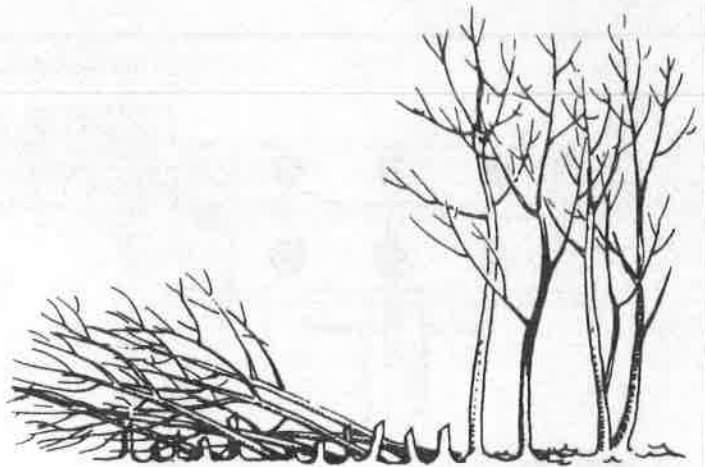
H E A D L A N D S



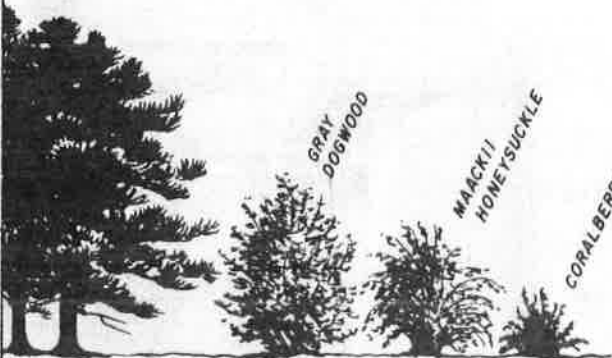
LEAVE FIELD EDGES AND HEADLANDS UNPLOWED. MOW PERIODICALLY TO KEEP DOWN BLUEGRASS, ETC., AND ENCOURAGE GROWTH OF MORE DESIRABLE CLOVER.



LEAVE STANDING GRAIN, CORN, BUCKWHEAT, OR SOYBEANS NEAR COVER.



CUT FENCEROW SAPLINGS AND LAY IN A CONTINUOUS WINDROW FOR MAXIMUM COVER.



PLANT A 3-OR 4-ROW SHRUB BORDER AROUND EVERGREEN STANDS.



CUT WOODLAND BORDERS 25-30 FT. DEEP. WINDROW BRUSH AND SLASHINGS. CROPS WILL BENEFIT FROM REMOVING TREES THAT COMPETE FOR SUNSHINE AND WATER.